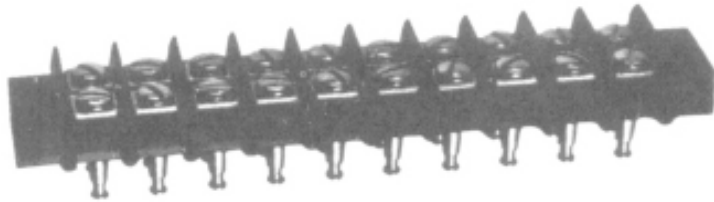




# 7/16" CENTERS DOUBLE ROW TURRET STYLE

## SERIES 18ST



**ORDERING INFO: 10-18ST**  
 First two digits: represents # of terminals  
 Second two digits: Block Type (18ST)

DIMENSIONS		
NUMBER OF TERM	A	B
-02	1.13	1.41
-03	1.50	1.78
-04	1.88	2.16
-05	2.25	2.53
-06	2.63	2.91
-07	3.00	3.28
-08	3.38	3.66
-09	3.75	4.03
-10	4.13	4.41
-11	4.50	4.78
-12	4.88	5.16
-13	5.25	5.53
-14	5.63	5.91
-15	6.00	6.28
-16	6.38	6.66
-17	6.75	7.03
-18	7.13	7.41
-19	7.50	7.78
-20	7.88	8.16
-21	8.25	8.53
-22	8.63	8.91
-23	9.00	9.28
-24	9.38	9.66
-25	9.75	10.03

**CONSTRUCTION:** FEED THRU SOLDER TURRET

**CURRENT RATING:** 20 AMPS

**MOLDING COMPOUND:** GP PHENOLIC

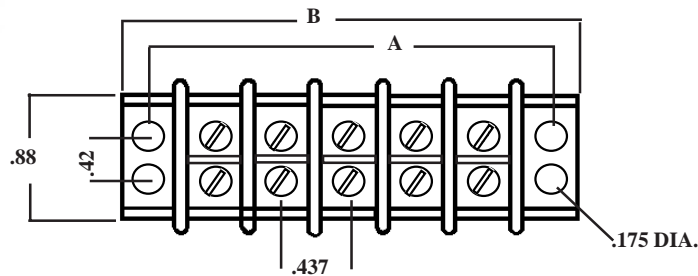
**COLOR:** BLACK

**VOLTAGE:** (300V) 1100 VOLTS RMS,

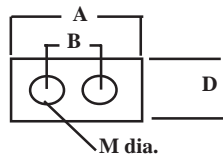
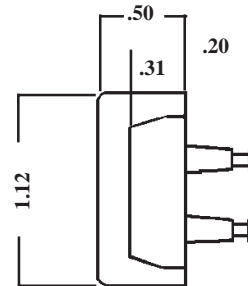
**SCREW TYPE:** 6/32 X 1/4" Slotted brass nickel plate

**RECOMMENDED WIRE SIZE:** 14 MAX AWG

**STRADDLE PLATES:** ADD SP TO PART NUMBER



(10-18ST-SP)



- A dia. = .71
- B dia. = .42
- D dia. = .31
- F dia. = .031
- M dia. = .148

DIMENSIONS ON STRADDLE PLATES MAY CHANGE CONSULT FACTORY